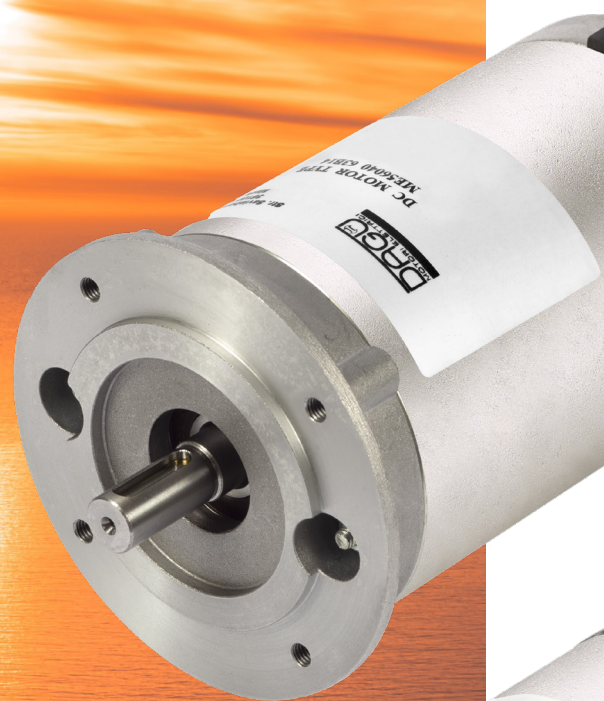
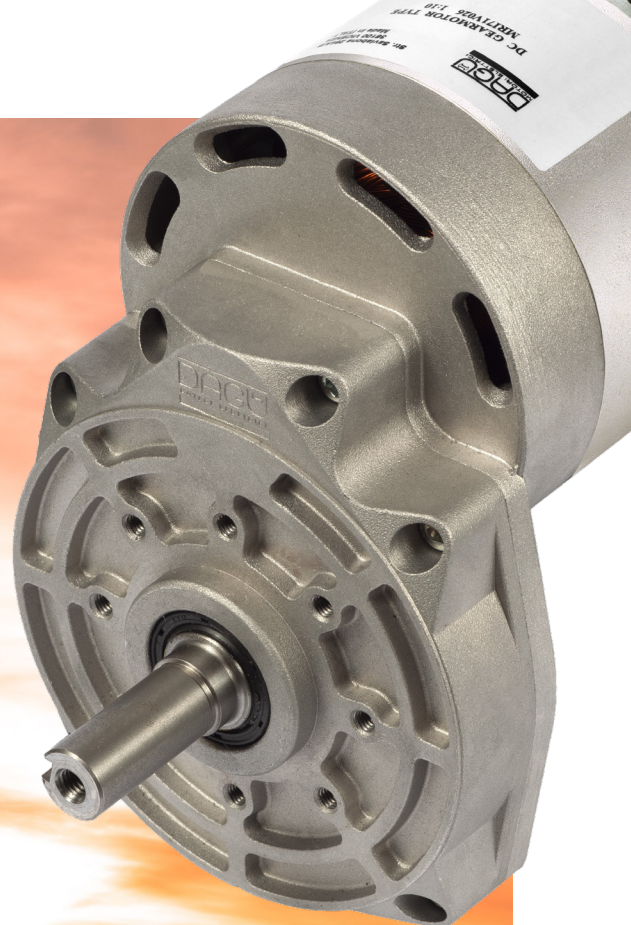




DESIGN,
ENGINEERING AND
MANUFACTURING OF

BRUSH AND
BRUSHLESS
DC AND AC
ELECTRIC MOTORS,
GEARMOTORS,
TRANSAXLES



WWW.DAGU.IT

WHO IS DAGU

DAGU was established in Vicenza in 1990 as a family-run craftsman company.

Since then, consistent commitment and continuous technological growth have led the company to achieve an important production capacity.

Investments in research, design and production, as well as efforts to satisfy a world-wide market, have trained us to provide fast and reliable service for all of our customers all around the world. Our vertically integrated production structure allows us to check the quality of the product throughout the entire processing chain: from the shearing of the sheet to the development of electronics.

The workforce is the most important resource for us: professionalism, qualification, experience and determination are fundamental qualities for our success.

We invest heavily in continuous training to ensure that all staff make a significant and constant contribution to business expansion since we are in fact convinced that our products are well considered in the market for quality and reliability thanks to a great team able to provide consistent added value.

2 WHO IS DAGU

4 TIMELINE

6 CERTIFICATIONS

7 DAGU AND ENVIRONMENT

8 OUR PRODUCTS

9 EM AC/DC brush

12 EM AC/DC brushless

13 EM AC/DC, brush
INOX AISI 316L

14 Brush and brushless
gearmotors

16 Transaxles

17 Encoders

18 Drivers

19 DAGU IN THE WORLD



**"THESE FACTS, COMBINED
WITH THE TRUST OF OUR CUSTOMERS
AND TOGETHER WITH OUR
COMPLETE DEDICATION,
ARE CRUCIAL
FOR OUR CONTINUED GROWTH"**

Stefano Maito
Ceo



TIMELINE

DAGU was born in **1990** from the intuition of one of the founding partners who gave the initial idea of **exploring the field of permanent magnet motors**.

Among the first companies to trust DAGU we record the sector of automatic opening devices.

The focus of the company is the **customization of the product** with the **quality** that characterizes the spirit of DAGU.



2020 Strengthening of internal mechanical processing aimed at responding to the increasingly strategic customer requests and reducing further delivery time

2020-2021 New products aimed at the food, beverage and medical market

2021 Beginning of the design of the new DAGU site

2023 Moves to the new Headquarter

Today DAGU invests in the future for customer satisfaction



CERTIFICATIONS

A continuous growth, a planned and CERTIFIED progress!

DAGU is ISO 9001 certified for quality and ISO 14001 for the environment. DAGU products are marked on request "UL/CSA" and comply with safety regulations.

DAGU motors also comply with the Machinery Directive and the EC Standard where applicable.



DAGU AND THE ENVIRONMENT

Environment Respect and protection are priority values for DAGU.

All DAGU company policies are aimed to "**reduction of the environmental impact**" of production activities, products and services provided.

DAGU pays the utmost attention to all aspects related to emissions into the atmosphere, using **renewable energy** for its activity.

DAGU **minimizes the waste output and the consumption of energy and natural resources** in the entire production chain.

Custom design is environmentally friendly!
Your motor will be perfectly sized for the use for which it is intended. This allows us to minimize energy consumption while ensuring maximum efficiency.



OUR PRODUCTS

AC/DC brush Electric Motors, with permanent magnets

DAGU customizes the product by developing the motor on request
looking at the customer specifications
Design is aimed at the best desired solution.

ME45 RANGE

Totally enclosed electric motors with
degree of protection of your choice.

- Power supply from 6V to 250V AC/DC
- Powers from 20W to 70W
- Service in S1, S2, S3
- Customizable Speed
- Mechanical Coupling 56B14 or customizable
- Optionals available: Brake, Encoder, Tachometric Dynamo, Thermal Sensors



ME56 RANGE

Totally enclosed electric motors with
degree of protection of your choice.

- Power supply from 12V to 250V AC/DC
- Powers from 30W to 280W
- Service in S1, S2, S3
- Mechanical Coupling 56/63B14, 56/63B5, 56/63B3B14, 56/63B3B5 or customizable
- Optionals available: Brake, Encoder, Tachometric Dynamo, Thermal Sensors





ME63 RANGE

Totally enclosed electric motors with degree of protection of your choice.

- Power supply from 12V to 250V AC/DC
- Powers from 100W to 600W
- Service in S1, S2, S3
- Mechanical Coupling 63/71B14, 63/71B5, 63/71B3B14, 63/71B3B5 or customizable
- Optionals available: Brake, Encoder, Tachometric Dynamo, Thermal Sensors

ME71 RANGE

Totally enclosed electric motors with degree of protection of your choice.

- Power supply from 12V to 250V AC/DC
- Powers from 170W to 650W
- Service in S1, S2, S3
- Mechanical Coupling 71B14, 71B5, 71B3B14, 71B3B5 or customizable
- Optionals available: Brake, Encoder, Tachometric Dynamo, Thermal Sensors



ME71V RANGE

Air cooled electric motors with IP20 degree of protection.

- Power supply from 12V to 250V AC/DC
- Powers from 250W to 1000W
- Service in S1, S2, S3
- Mechanical Coupling 71B14, 71B5, 71B3B14, 71B3B5 or customizable
- Optionals available: Brake, Encoder, Tachometric Dynamo, Thermal Sensors



ME80 RANGE

Totally enclosed electric motors with degree of protection of your choice.

- Power supply from 12V to 250V AC/DC
- Powers from 200W to 900W
- Service in S1, S2, S3
- Mechanical Coupling 80B14, 80B5, 80B3B14, 80B3B5 or customizable
- Optionals available: Brake, Encoder, Tachometric Dynamo, Thermal Sensors

ME80V RANGE

Air cooled electric motors with IP20 degree of protection.

- Power supply from 12V to 250V AC/DC
- Powers from 300W to 1500W
- Service in S1, S2, S3
- Mechanical Coupling 80B14, 80B5, 80B3B14, 80B3B5 or customizable
- Optionals available: Brake, Encoder, Tachometric Dynamo, Thermal Sensors



**DAGU follows the customer in choosing the product.
Professionalism and in-depth knowledge allow us
to customize your motor.**

AC/DC brushless Electric Motors, with permanent magnets

Designed for specific applications, DAGU motors can be supplied with brushless technology in the ME56 series; offer high performance, reduced maintenance, low noise and high efficiency.

On request Driver mounted on board or connected by cable.

ME56 RANGE

- Power supply from 12V to 48V
- Powers from 50W to 130W
- Service in S1, S2 or S3
- Speed from 1500 to 5000 rpm
- Mechanical Coupling 56/63B14, 56/63B5, 56/63B3B14, 56/63B3B5 or customizable
- Optionals available: Brake, Encoder, Tachometric Dynamo, Thermal Sensors
- Position transducer: Hall effect, power supply from 3.5V to 24V, 50mA



AC/DC brush Electric Motors, with permanent magnets INOX AISI 316L

DAGU is active in the food, beverage and hospital segment
with the complete ME45 to ME80 range motors
in AISI 316L stainless steel.

On request DAGU customizes the motors according to customer specifications.

ME45 RANGE

ME56 RANGE

ME63 RANGE

ME71 RANGE

ME80 RANGE



AC/DC brush and brushless gearmotors with permanent magnets

Each project will be carried out according to the customer's specifications

MRI RANGE

Air cooled and totally enclosed parallel axis gearmotors with degree of protection of your choice.

- Power supply from 12V to 250V AC/DC
- Speed on customer specifications
- Optionals available: Brake, Encoder, Tachometric Dynamo, Thermal Sensors

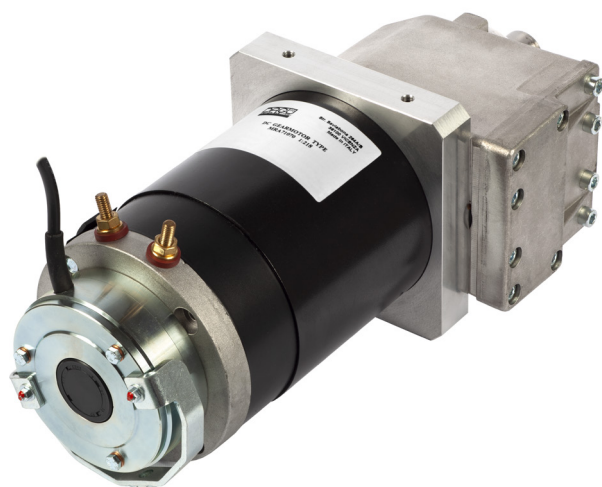


MRE RANGE

Planetary Electric gearmotors with degree of protection of your choice.

- Power supply from 12V to 250V AC/DC
- Speed on customer specifications
- Optionals available: Brake, Encoder, Tachometric Dynamo, Thermal Sensors





MRA RANGE

Air cooled and totally enclosed coaxial gearmotors with degree of protection of your choice.

- Power supply from 12V to 250V AC/DC
- Speed on customer specifications
- Optionals available: Brake, Encoder, Tachometric Dynamo, Thermal Sensors

MRV RANGE

Totally enclosed Air cooled, worm gearmotors with IP protection of your choice.

- Power supply from 12V-250V AC/DC
- Speed on customer specifications
- Optionals available: Brake, Encoder, Tachometric Dynamo, Thermal Sensors



RDM-200

Orthogonal screw gearmotor.

RDM-200 is a modular, compact, economical and high-efficiency angular screw gearmotor. It uses a high-precision worm and features a cylindrical by-pass service output.

- Supply voltage: from 12V-to 230V
- Reduction ratio 32:1

Transaxles

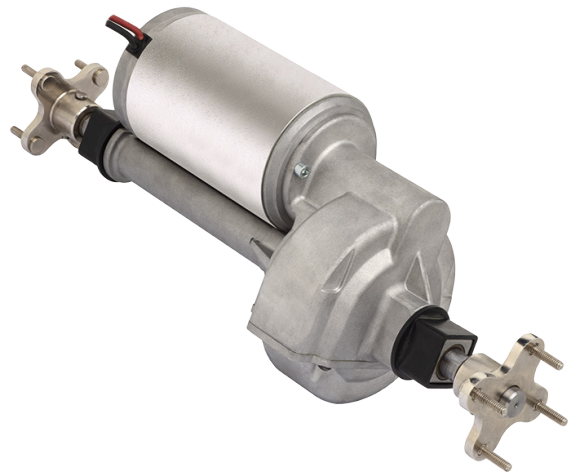
Designed to meet all the needs of automatic and assisted handling.

TDM-400

TOTALLY ENCLOSED AXIAL

TDM-400: Robust, reliable and easily adaptable to every customer application. Ready to be inserted into the frame via a modular axis.

- Supply voltage: from 12V to -230V
- Reduction ratio 12:1 / 21:1
- Wheel accommodation hub on request



TDM-600

TOTALLY ENCLOSED AXIAL

TDM-600: Robust, reliable and easily adaptable to every customer application. Ready to be inserted into the frame via a modular axis.

- Supply voltage: from 12V to -230V
- Reduction ratio 24:1 / 36:1
- Wheel accommodation hub on request



Encoders

We design and manufacture the encoders applied to our products, guaranteeing the highest quality.

Incremental encoders

NTM53 RANGE

- Up to 2048 pulses revolution
- Protection class up to IP54
- Cable output with connector
- Ease of assembly
- Compact design to reduce space



Incremental encoders

NTP60 RANGE

Dedicated to applications for the food and beverage, packaging and aerospace chain

- Up to 2048 pulses revolution
- Protection class up to IP64
- Cable output with connector
- Ease of assembly
- Compact design to reduce space



Driver

We design and manufacture the drivers for our electric motors directly.
We ensure the best control for maximum yield and durability!

HFR RANGE

High frequency HFR 1D unidirectional electronic control and energy recovery

- Rated operating voltage: 12-24-36V
- Permissible feeding variation: 85 - 125%
- Operating frequency: $\geq 18\text{Khz}$



4QHF RANGE

High frequency 3D 4QHF bidirectional electronic control and energy recovery

- Rated operating voltage: 12-24-36-48V
- Permissible feeding variation: 80 - 125%
- Operating frequency: 17Khz



DAGU in the world



ÖSTERREICH
AUSTRALIA
BANGLADESH
BRAZIL
SWITZERLAND
CHINA
CZECH REPUBLIC
DEUTSCHLAND
DENMARK
EGYPT
GREECE
SPAIN
FRANCE
GREAT BRITAIN

INDIA
ISRAEL
SOUTH KOREA
MALTA
THE NETHERLAND
NEW ZEALAND
POLAND
PORTUGAL
SWEDEN
SAN MARINO
SLOVENIA
TURKEY
UKRAINE
UNITED ARAB EMIRATES
USA



*To meet your requests, we are ready to reach you
beyond the horizon*

DAGU

ELECTRIC MOTORS

DAGU s.r.l.
Via dell'Artigianato, 14
Monticello Conte Otto (VI)
36010 - Italy
Tel. +39 0444 304913
Fax +39 0444 510393

www.dagu.it - dagu@dagu.it