



#### QUICK SELECTION / Selezione veloce

input speed (n<sub>1</sub>) = 1400 min<sup>-1</sup>

Output Speed n <sub>2</sub> [min <sup>-1</sup> ]	Ratio i	Motor power P <sub>1M</sub> [kW]	Output torque M <sub>2M</sub> [Nm]	Service factor f.s.	Nominal power P <sub>1R</sub> [kW]	Nominal torque M <sub>2R</sub> [Nm]	Available B5 motor flanges				Available B14 motor flanges			Output Shaft 	Ratios code
							-B	-C	-D	-E	-Q	-R	-T		
							63	71	80	90	71	80	90		
22.3	<b>62.76</b>	1.5	603	1.1	<b>1.68</b>	<b>675</b>	B				C	C		191213	01
20.2	<b>69.28</b>	1.5	665	1.0	<b>1.52</b>	<b>675</b>	B				C	C		191212	02
19.2	<b>72.75</b>	1.5	698	1.0	<b>1.45</b>	<b>675</b>	B				C	C		171213	03
17.4	<b>80.29</b>	1.5	771	0.9	<b>1.31</b>	<b>675</b>	B				C	C		171212	04
16.4	<b>85.39</b>	1.1	599	1.1	<b>1.23</b>	<b>675</b>	B				C	C		151213	05
14.9	<b>94.25</b>	1.1	661	1.0	<b>1.12</b>	<b>675</b>	B				C	C		151212	06
13.7	<b>101.92</b>	1.1	715	0.9	<b>1.03</b>	<b>675</b>	B				C	C		131213	07
12.4	<b>112.50</b>	0.75	541	1.2	<b>0.94</b>	<b>675</b>	B				C	C		131212	08
11.9	<b>117.29</b>	0.75	564	1.2	<b>0.90</b>	<b>675</b>	B				C	C		151210	09
10.1	<b>139.13</b>	0.75	669	1.0	<b>0.76</b>	<b>675</b>	B				C	C		101213	10
9.1	<b>153.56</b>	0.75	739	0.9	<b>0.69</b>	<b>675</b>	B				C	C		101212	11
7.7	<b>181.57</b>	0.55	644	1.0	<b>0.58</b>	<b>675</b>	B				C	C		91213	12
7.0	<b>200.42</b>	0.55	711	0.9	<b>0.53</b>	<b>675</b>	B				C	C		91212	13
5.6	<b>249.41</b>	0.37	592	1.1	<b>0.42</b>	<b>675</b>	B				C	C		91210	14
4.3	<b>329.33</b>	0.37	781	0.9	<b>0.32</b>	<b>675</b>	B				C	C		71210	15

The dynamic efficiency is **0.94** for all ratios

Motor Flanges Available Flange Motore Disponibili  
 Supplied with Reduction Bushing Fornito con Bussola di Riduzione  
 Available on Request without reduction bushing Disponibile a Richiesta senza Bussola di Riduzione  
 Motor Flange Holes Position Posizione Fori Flangia Motore

**EN** Unit **713C** is supplied with synthetic oil for lifetime lubrication, no maintenance is necessary. See table 1 for lubrication and recommended quantity. In table 2 please see possible radial loads and axial loads on the gearbox.

**I** Il riduttore **713C** viene fornito completo di olio sintetico per la lubrificazione permanente e non necessita di alcuna manutenzione. Vedi tab.1 per oli e quantità consigliati. In tab.2 sono presenti i carichi radiali e assiali applicabili al riduttore.

**D** Das Getriebe **713C** ist mit synthetischem Öl gefüllt und ist lebensdauergeschmiert. In Tabelle 1 ist die Schmiermenge und das empfohlene Schmiermittel angegeben. In Tabelle 2 sind die zulässigen Radial - und Axialbelastungen des Getriebes aufgeführt.

**F** Le réducteur **713C** est fourni complet avec de l'huile synthétique pour la lubrification permanente et ne nécessite aucun entretien. Voir tableau 1 concernant les huiles et les quantités conseillées. Les charges radiales et axiales applicables au réducteur sont précisées dans le tableau 2.

**E** El reductor tamaño **713C** se suministra, lubricado de por vida con aceite sintético y no requieren mantenimiento alguna. Ver tabla 1, para cantidades y aceites recomendados. En la tabla 2, se encuentran las cargas radiales y axiales admitidas por el reductor.

<b>B3</b>	<b>B6</b>	<b>B7</b>	<b>B8</b>	<b>V5</b>	<b>V6</b>	<b>V8</b>
1.60 LT	2.20 LT	1.80 LT	1.70 LT	2.80 LT	1.90 LT	Ask

**SHELL** Omala S2 GX 460 **ENI** Blasias 460

For all details on lubrication and plugs check our website  
Per maggiori dettagli su lubrificazione e tappi olio vedi il nostro sito web **tab. 1**

### RADIAL AND AXIAL LOADS

**Output shaft**  
Albero di uscita

$$F_{eq} = F_R \cdot \frac{78}{X+38}$$

**Input shaft**  
Albero in entrata

n <sub>2</sub>	FA	FR	n <sub>2</sub>	FA	FR	n <sub>2</sub>	FA	FR
<b>300</b>	680	3400	<b>140</b>	960	4800	<b>70</b>	1300	6500
<b>250</b>	760	3800	<b>120</b>	1040	5200	<b>40</b>	1460	7300
<b>200</b>	900	4500	<b>85</b>	1120	5600	<b>15</b>	1800	9000

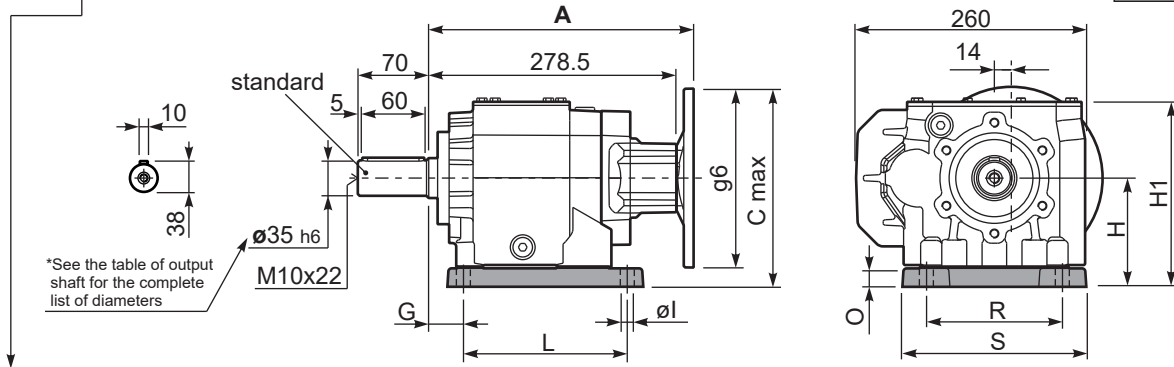
**On request reinforced bearings to increase loads.**  
A richiesta cuscinetti rinforzati per aumentare i carichi.

n <sub>1</sub>	FA	FR
<b>1400</b>	400	2000
<b>900</b>	440	2200
<b>500</b>	440	2200

**tab. 2**

P713C**S6**... With feet  
Con piedini

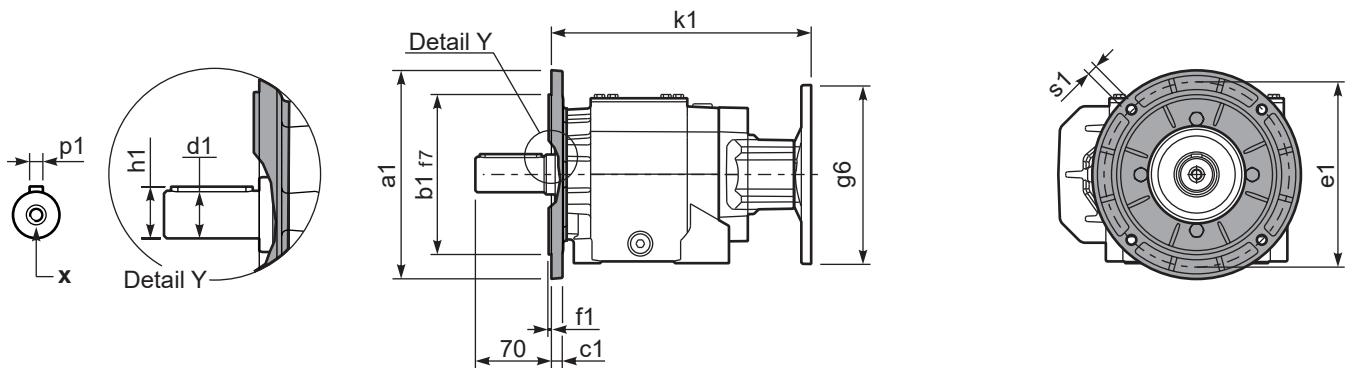
Gearbox weight / peso riduttore: With flange **34.5 kg**  
With feet **36.2 kg**



**Feet / piedini**

Feet Code	Market reference	G	H	R	L	S	H1	O	Øl	B5 max. Flange	kit code
B4	412/3	19.5	130	180	149.5	220	220	25	14	-	KC71.9.022
S6	67	30	130	150	195	210	220	25	14	-	KC71.9.024

P713C-**F**... Output flanges  
flange di uscita



**\*Available output shaft / Alberi di uscita**

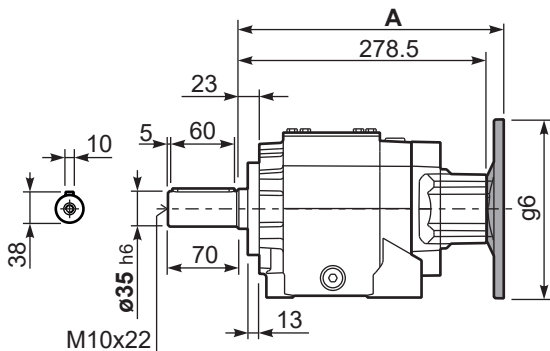
	Shaft - d1	p1	h1	x
Standard	Ø 35x70	10	38	M10x22
On request A richiesta	Ø 38x70	10	41	M10x25

**Available output flanges / flange di uscita**

a1 Ø	b1	c1	e1	f1	s1	kit code
200	130	11	165	3.5	11	KC71.9.012
250	180	13	215	4	14	KC81.9.013
-	-	-	-	-	-	-

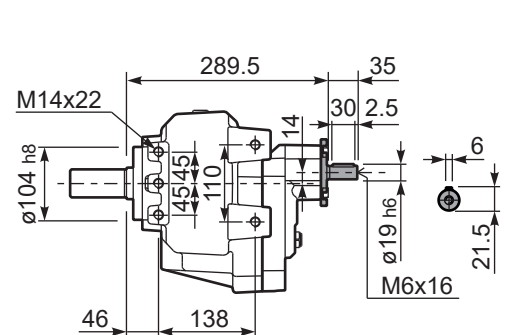
With flange and feet only on request. Ask for compatibility

P713C-**N**... Basic gearbox  
Riduttore base



B5 Motor Flanges	A	C <sub>max</sub>	g6	k1	kit code
63 B5	299	200	140	299	K063.4.041
71 B5	297	210	160	297	K063.4.042
80/90 B5	299	230	200	299	K063.4.043

**R713C-N**... Input Shaft  
Albero in entrata



B14 Motor Flanges	A	C <sub>max</sub>	g6	k1	kit code
71 B14	297	190	120	297	K063.4.047
80 B14	299	190	120	299	K063.4.046
90 B14	299	200	140	299	K063.4.041