



QUICK SELECTION / Selezione veloce

input speed (n_1) = 1400 min⁻¹

| Output Speed n_2 [min ⁻¹] | Ratio i | Motor power P_{1M} [kW] | Output torque M_{2M} [Nm] | Service factor $f.s.$ | Nominal power P_{1R} [kW] | Nominal torque M_{2R} [Nm] | Available B5 motor flanges | | | Available B14 motor flanges | | | Output Shaft | Ratios code | |
|-----------------------------------------------|--------------|---------------------------------|-----------------------------------|--------------------------|-----------------------------------|------------------------------------|----------------------------|----|------------|-----------------------------|----|------------|------------------|-----------------|----|
| | | | | | | | -D | -E | -F | -R | -T | -U | | | |
| | | | | | | | 80 | 90 | 100 112 | 80 | 90 | 100 112 | | | |
| 481 | 2.91 | 4 | 76 | 1.8 | 7.2 | 140 | B | B | | B | B | | 3499 | standard | 01 |
| 373 | 3.75 | 4 | 98 | 1.6 | 6.4 | 160 | B | B | | B | B | | 28105 | ø30 | 02 |
| 263 | 5.33 | 4 | 140 | 1.2 | 4.8 | 170 | B | B | | B | B | | 21112 | | 03 |
| 219 | 6.39 | 4 | 167 | 1.0 | 4.0 | 170 | B | B | | B | B | | 18115 | ø25 | 04 |
| 178 | 7.85 | 4 | 205 | 1.1 | 4.3 | 225 | B | B | | B | B | | 13102 | ø35 | 05 |

The dynamic efficiency is **0.98** for all ratios

On request

Motor Flanges Available Flange Motore Disponibili
 B) Supplied with Reduction Bushing Fornito con Bussola di Riduzione
 B) Available on Request without reduction bushing Disponibile a Richiesta senza Bussola di Riduzione
 C) Motor Flange Holes Position Posizione Fori Flangia Motore

EN Unit **FA41** is supplied with synthetic oil for lifetime lubrication, no maintenance is necessary. See table 1 for lubrication and recommended quantity. In table 2 please see possible radial loads and axial loads on the gearbox.

I Il riduttore **FA41** viene fornito completo di olio sintetico per la lubrificazione permanente e non necessita di alcuna manutenzione. Vedi tab.1 per oli e quantità consigliati. In tab.2 sono presenti i carichi radiali e assiali applicabili al riduttore.

D Das Getriebe **FA41** ist mit synthetischem Öl gefüllt und ist lebensdauergeschmiert. In Tabelle 1 ist die Schmiermenge und das empfohlene Schmiermittel angegeben. In Tabelle 2 sind die zulässigen Radial- und Axialbelastungen des Getriebes aufgeführt.

F Le réducteur **FA41** est fourni complet avec de l'huile synthétique pour la lubrification permanente et ne nécessite aucun entretien. Voir tableau 1 concernant les huiles et les quantités conseillées. Les charges radiales et axiales applicables au réducteur sont précisées dans le tableau 2.

E El reductor tamaño **FA41** se suministra, lubricado de por vida con aceite sintético y no requieren mantenimiento alguna. Ver tabla 1, para cantidades y aceites recomendados. En la tabla 2, se encuentran las cargas radiales y axiales admitidas por el reductor.

| Standard supplied | For these mounting position specify in the order or add oil Per queste posizioni specificare in fase d'ordine o aggiungere olio | | | | |
|---------------------|------------------------------------------------------------------------------------------------------------------------------------|---------|-----------------------|---------|---------|
| | | | | | |
| 1.10 LT | 0.65 LT | 0.65 LT | 0.65 LT | 1.15 LT | 0.80 LT |
| AGIP Telium VSF 320 | | | SHELL Omala S4 WE 320 | | |

For all details on lubrication and plugs check our website tab. 1
Per maggiori dettagli su lubrificazione e tappi olio vedi il nostro sito web

RADIAL AND AXIAL LOADS

Output shaft
Albero di uscita

F_R (N)
 F_A (N)

$F_{eq} = F_R \cdot \frac{127.5}{X+97.5}$

F_{eq} (N)

| n_2 [min ⁻¹] | FA | FR | n_2 [min ⁻¹] | FA | FR | n_2 [min ⁻¹] | FA | FR |
|-------------------------------|-----|------|-------------------------------|-----|------|-------------------------------|-----|------|
| 300 | 300 | 1500 | 140 | 390 | 1950 | 70 | 490 | 2450 |
| 250 | 320 | 1600 | 120 | 410 | 2050 | 40 | 590 | 2950 |
| 200 | 350 | 1750 | 85 | 460 | 2300 | 15 | 800 | 4000 |

On request reinforced bearings to increase loads.
A richiesta cuscinetti rinforzati per aumentare i carichi.

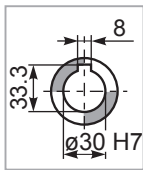
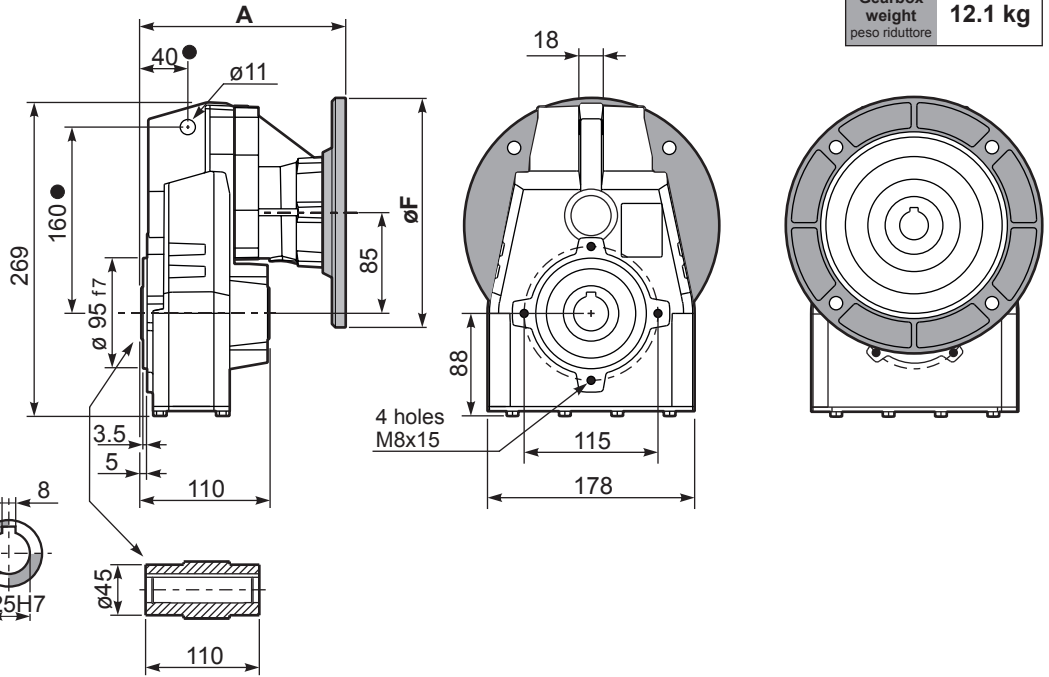
tab. 2

PFA41C... Basic gearbox
Riduttore base

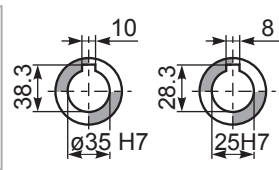
Gearbox weight
peso riduttore **12.1 kg**

| M. flanges | Kit code | øF | A |
|-------------------|------------|-----|-------|
| 80/90B5 | K023.4.042 | 200 | 179.5 |
| 100/112B5 | K023.4.043 | 250 | 188.5 |
| 80B14 | K085.4.046 | 120 | 179.5 |
| 90B14 | K085.4.045 | 140 | 179.5 |
| 100/112B14 | K085.4.047 | 160 | 188.5 |

● Available torque arms,
see our web site
Bracci di reazione disponibili,
consulta il nostro sito web



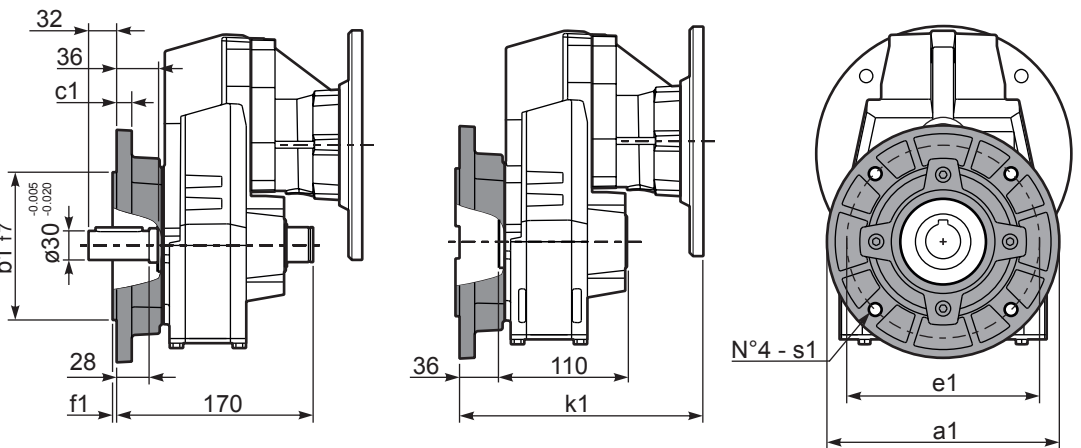
Standard
Hollow shaft



On request
A richiesta

PFA41...-F... Output flange
Flangia uscita

| M. flanges | k1 |
|-------------------|-------|
| 80/90B5 | 215.5 |
| 100/112B5 | 221.5 |
| 80B14 | 213.5 |
| 90B14 | 213.5 |
| 100/112B14 | 224.5 |



Available output flanges
Flange di uscita

| a1 ø | b1 | c1 | e1 | f1 | s1 | Kit code |
|------|-----|----|-----|-----|----|------------|
| 160 | 110 | 10 | 130 | 3 | 9 | KX5A.9.010 |
| 200 | 130 | 13 | 165 | 3.5 | 11 | KX5A.9.011 |
| 250 | 180 | 14 | 215 | 4 | 14 | KX5A.9.012 |

PFA41 A... Single output shaft
Albero uscita semplice

