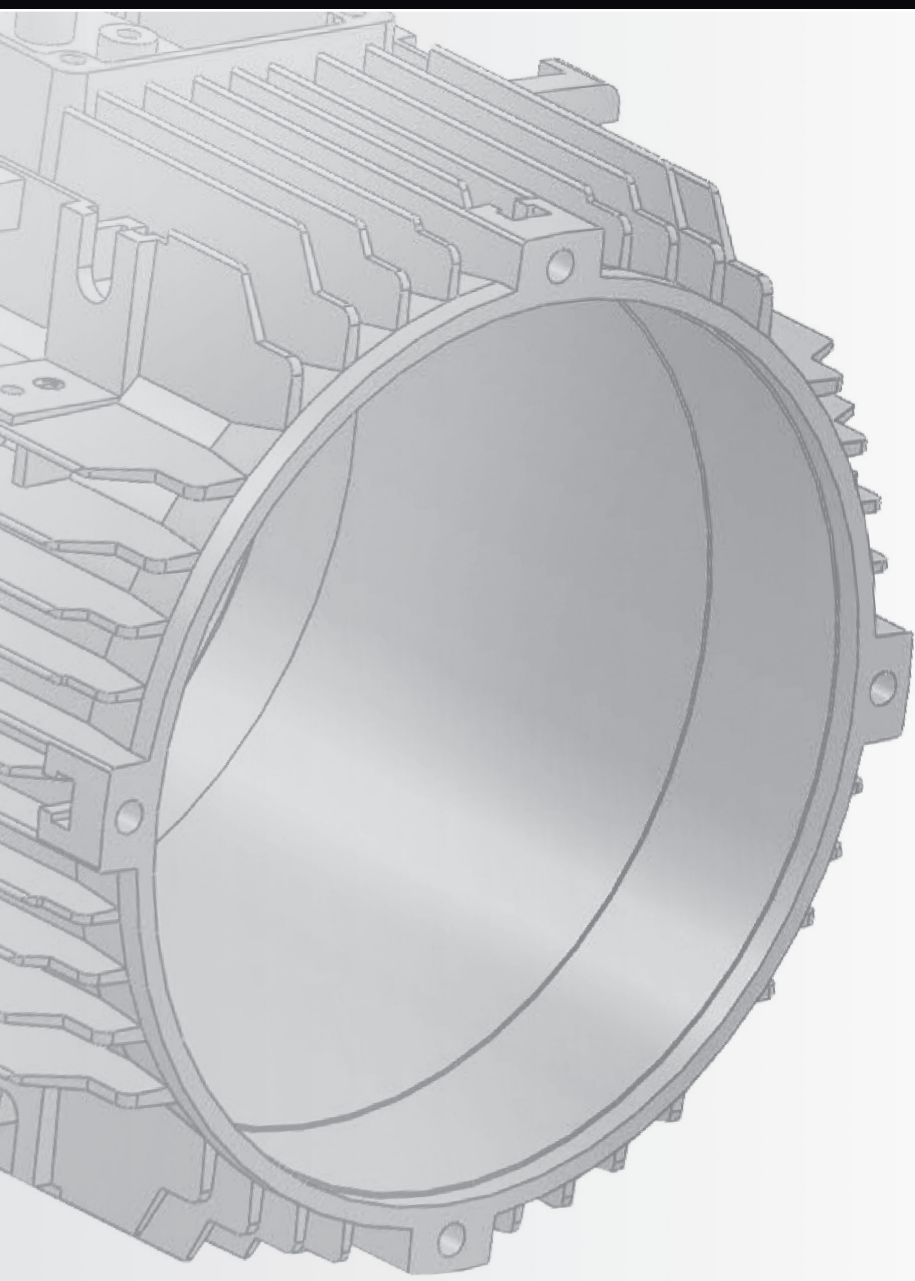




Series 6: Aluminum electric motors frame details

Serie 6: Caratteristiche motori con carcassa in alluminio





Aluminum electric motors, three-phase, single-phase and double speed, starting from IEC56 to IEC132 (other on request).

Available on painting RAL 5010. Aluminum sanblasted or special painting on request. Bearings NSK/SKF greased for life.

Motori elettrici in alluminio trifase, monofase e doppia velocità, dalla grandezza IEC56 a IEC132 (altre taglie su richiesta).

Disponibili di serie con verniciatura protettiva RAL 5010. A richiesta alluminio sabbiato o verniciature speciali. Cuscinetti lubrificati a vita NSK/SKF.



Serie 6T4
Super Premium Efficiency IE4



Serie 6T3
Premium Efficiency IE3



Serie 6T2
High Efficiency IE2

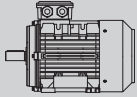
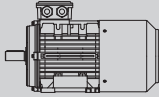






Serie 6T1
Efficiency IE1

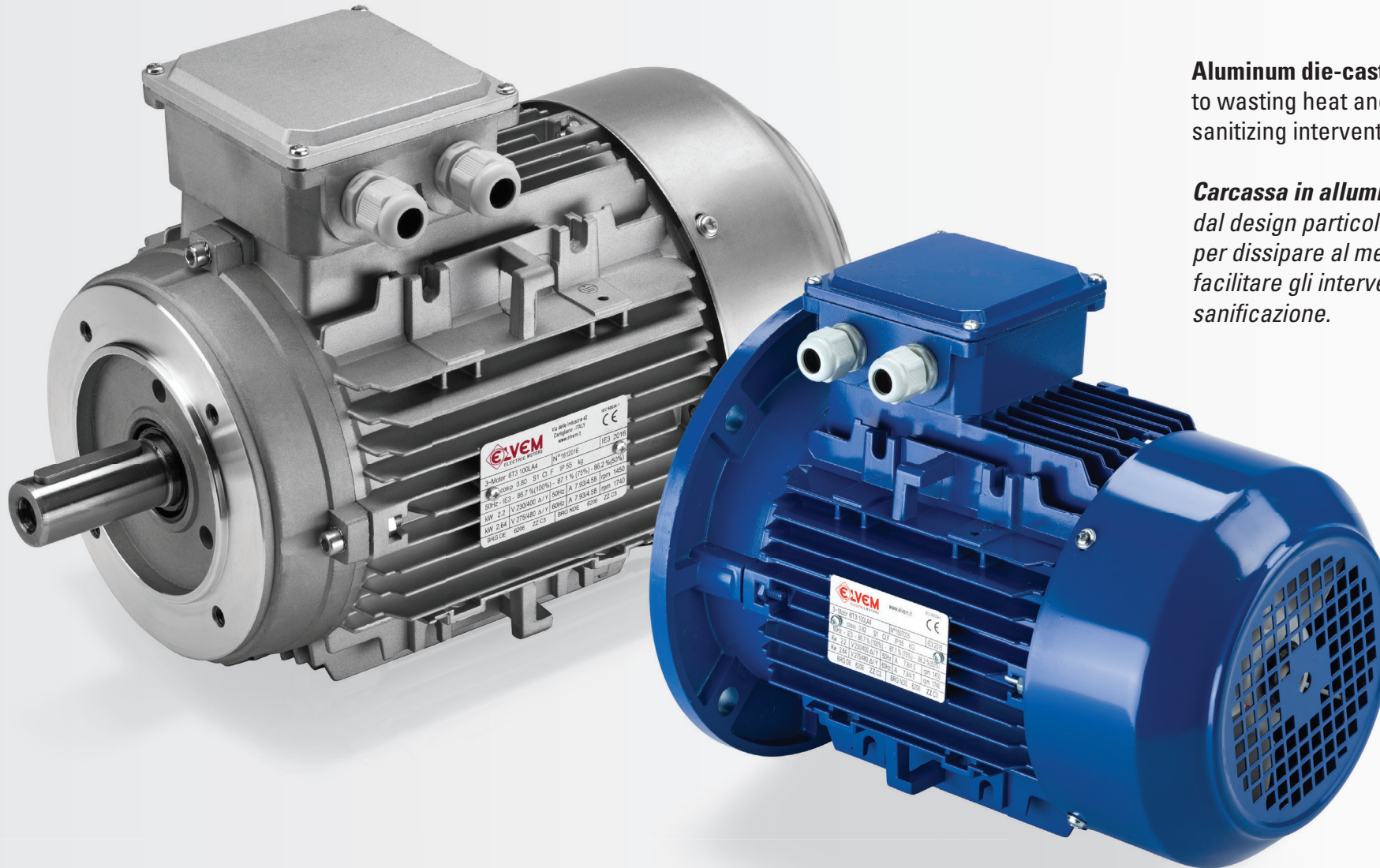


Key product identification

Chiave di identificazione del prodotto

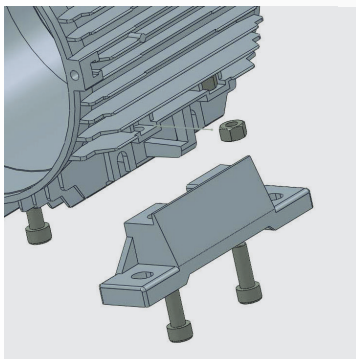
Construction Costruzione	Series Serie	Poles Polarità	Efficiency Rendimento	 Three phase motors <i>Motori Trifase</i>	 Three-phase brake motors <i>Motori Trifase Autofrenanti</i>				
					C	K	S	R	H
					Brake / Freno CA High torque <i>Alta coppia frenante</i>	Brake / Freno CC High torque <i>Alta coppia frenante</i>	Brake / Freno CC Rallentatore <i>Rallentatore</i>	Brake / Freno CC Positive <i>Positivo</i>	Brake / Freno CC High torque <i>Elevata coppia frenante</i>
6	6T	Single speed <i>Singola Polarità</i>	IE1 	6T1 56÷132	6TC 63÷132	6TK 63÷132	6TS 63÷132	6TR 63÷132	6TH 63÷132
			IE2 	6T2 63÷132	6TC2 63÷132	6TK2 63÷132	6TS2 63÷132	6TR2 63÷132	6TH2 63÷132
			IE3 	6T3 63÷132	6TC3 63÷132	6TK3 63÷132	6TS3 63÷132	6TR3 63÷132	6TH3 63÷132
			IE4 	6T4 63÷132	6TC4 63÷132	6TK4 63÷132	6TS4 63÷132	6TR4 63÷132	6TH4 63÷132
	6P	Double speed Constant torque	<i>Doppia polarità Coppia costante</i>	6P 71÷132	6PC 71÷132	6PK 71÷132	6PS 71÷132	6PR 71÷132	6PH 71÷132
	6V	Double speed Quadratic torque	<i>Doppia polarità Coppia quadratica</i>	6V 71÷132	-	-	-	-	-
	6M	Single-phase Run capacitor	<i>Monofase Condensatore permanente</i>	6M 56÷100	-	6MK 63÷100	6MS 63÷100	6MR 63÷100	6MH 63÷100
	6L	Single-phase Centrifugal switch	<i>Monofase Disgiuntore centrifugo</i>	6L 63÷112	-	-	-	-	-

On request available size from 160 to 200
 Su richiesta disponibile dalla grandezza 160 alla 200



Aluminum die-cast, studied design to wasting heat and making easy sanitizing interventions.

Carcassa in alluminio pressofuso dal design particolarmente curato per dissipare al meglio il calore e facilitare gli interventi di sanificazione.



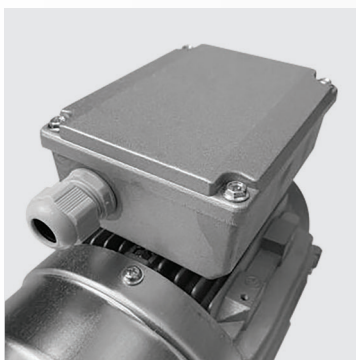
Removable **feet**, mounted with self-blocking nut, adjustable on 3 side.

***Piedi** removibili, fissati con dadi autobloccanti, orientabili su 3 lati.*



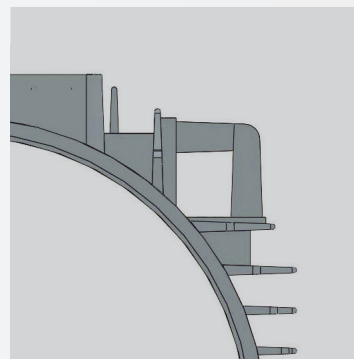
Three-phase **terminal box** adjustable on 4 positions. Large space inside for an easy electrical wiring.

*Scatola **morsettiera** trifase regolabile in 4 posizioni con ampi spazi interni per facilitare il cablaggio elettrico.*



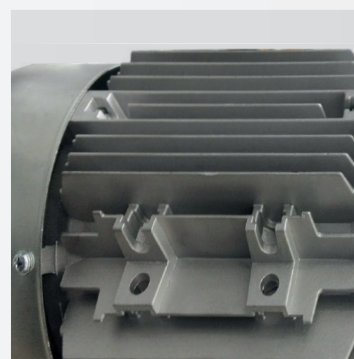
Aluminum single-phase terminal box adjustable on 4 positions with run capacitor inside.

*Scatola **morsettiera monofase in alluminio** regolabile in 4 posizioni con condensatore interno.*



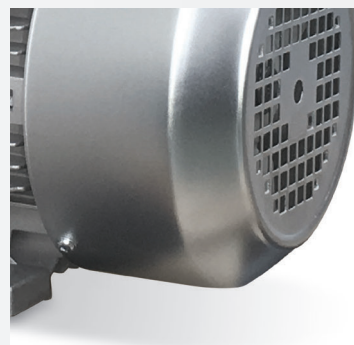
Casting **eye-bolt** on 4 sides, starting from size 100.

***Golfari di sollevamento** in fusione nei 4 lati, a partire dalla grandezza 100.*



Finning designed to guarantee an uniform cooling.

***Alettature** progettate per garantire un raffreddamento uniforme.*



Sheet metal fan cover studied to avoid resonance and to better convey the air.

***Copriventola** in lamiera stampata. Design studiato per evitare fenomeni di risonanza e migliorare il convogliamento dell'aria.*



Shaft seals double lip on DE and NDE side ensuring high protection.

Anelli di tenuta doppio labbro su lato DE e NDE per un'elevata protezione.



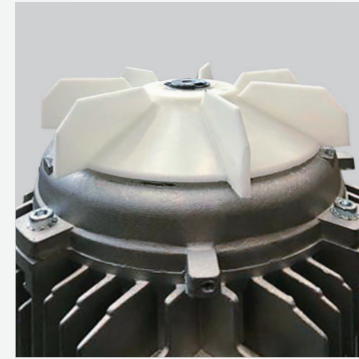
C45 steel shaft well finishing surface.

Albero in acciaio C45 con ottime finiture superficiali.



SKF/NSK bearings ZZ C3 greased for life.

Cuscinetti SKF/NSK ZZ C3 lubrificati a vita.



Plastic reversible fan with glass fibers to assuring a good air convey and reducing noises.

Ventola reversibile realizzata in materiale plastico caricato con fibre di vetro atta a garantire il miglior flusso d'aria e ridurre al minimo la rumorosità.



Bakelite terminal board with trickery zinc.

Morsettiera in bachelite con minuteria zincata.



Protection rubber on terminal board base to avoid the entrance of external material during mounting process.

Gomma di protezione sulla base della morsettiera atta anche ad evitare l'ingresso di materiale esterno durante l'installazione.



Polyamide metrical **cable glands** IP68 with neoprene gasket; works temperature -20°C $+90^{\circ}\text{C}$

***Pressacavi metrici** in poliammide IP68 con guarnizioni in neoprene e temperatura di esercizio -20°C $+90^{\circ}\text{C}$.*



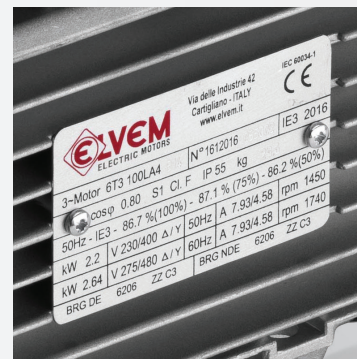
Epoxy painting with specific characteristics to giving the best protection against oxidation.

***Verniciatura epossidica** con caratteristiche tali da dare al motore un'ottima protezione contro l'ossidazione.*



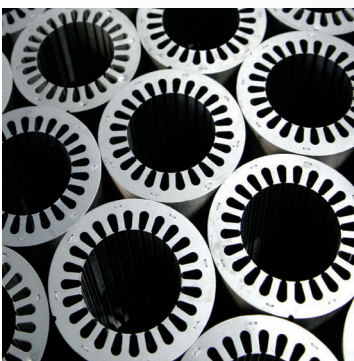
Winding stator realized with enameled copper G2, class H, impregnated by technological processes. Phase separator on at the head.

***Avvolgimento statore** realizzato con rame smaltato G2, classe H, impregnato con processi tecnologici. Separatori di fase in testata.*



Aluminium anodized **name plate**

***Targhetta** in alluminio anodizzato*



The low losses magnetic sheet assures efficiency levels higher than IEC parameters.

*Il **lamierino magnetico** a basse perdite utilizzato assicura livelli di rendimento superiori ai parametri IEC.*



Packaging on single cardboard box with Elvem's logo

Imballo singolo in scatole di cartone con logo Elvem



Elvem S.R.L.

Via delle Industrie, 42
36050 Cartigliano (VI) - Italy

T +39 0424 513 972
+39 0424 354 10
F +39 0424 354 05

@ elvem@elvem.it

www.elvem.it